

A Note from Pastor Phil

WOW! What a busy season we are in. I just returned from ministering seven times over the weekend out in the Hyde Park, New York area. I spoke five of those times at a men's retreat and then twice at the church on Sunday morning. What a great time. I drove around 600 miles round trip and right back to it here at the church. Yesterday with the blessing of the elders, I put down 75% deposit on the flooring for the auditorium. It will be by the end of May or the middle of June the floor will be done. I have been coordinating with Henk and a work crew to help us get walls painted and drywall completed. It is coming along nicely.



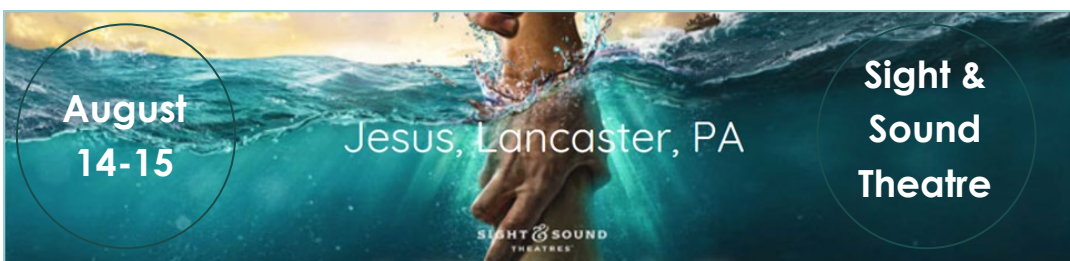
Tonight we are having a couple from the church over for dinner, and Sunday we are having Alcides Roman from Paraguay ministering at the church. My wife has been co-coordinating the collection of household items for the Slisher family which is a major undertaking with everything from towels to living quarters when they return. I want to thank all of you on behalf of myself and the elders for your generosity in furnishing the apartment for the Slisher family. I also want to thank my wife!!!

We just had staff meeting today and Pastor Jonas and Bet Cortes are busy planning things for the youth group. They are planning on taking our youth to a worship camp this summer. They are doing fundraisers to offset the expense of the camp. We are also taking an offering this month for the kids to help them get the early bird rate. Feel free to give anytime in May and designate it "Youth Worship Camp." Every penny will go to the camp expense.

Missions has always been an emphasis here, and our mission's season started last Sunday with Alex and Jodi Seidler—missionaries we have supported for years in Asia. Alex is soon to be the new Global Missions Director for Elim Fellowship. Also, I have invitations to go to Costa Rica, and Guatemala this year, and for early next year to Japan and a retreat for missionaries in Thailand.

Remember a sermon I gave almost a year ago about acceleration—that we are in a season of acceleration? It is a Kairos moment. Things that took years will come in days. Believe the Lord with me for more.

Reserve Tickets Now For Tour to Sight & Sound Theatres



Information for this tour can be found at Info Central or at CoveredWagonTours.net. Steve and Sue Hunter will be going on this tour and can answer questions at blue-caravan@rochester.rr.com.

May 2018

Sun	Mon	Tue	Wed	Thu	Fri	Sat
		1	2 Prayer 9am First Wednesday Prayer 7pm	3 Fantauzzo's Life Group 6:30pm	4	5 Walk for Life 10am FWYC 4-6 In Touch Bunch 7pm
6 Worship 10am Communion Pastor Phil No Kids Club Youth Grp 6pm Life Group 6pm	7	8	9 Prayer 9am	10	11	12 Men's Break- fast 9am
13 Mother's Day Worship 10am Bet Cortes No Youth Grp	14 Worship Team Practice 6-8pm	15	16 Prayer 9am Women's Mtg 6:30pm	17 Fantauzzo's Life Group 6:30pm	18	19 Brentland Woods 2pm Impart Young Adults 6:30pm
20 Youth Sunday Worship 10am Paul Johansson Kids' Club 6pm Youth Grp 6pm Life Group 6pm	21	22	23 No Prayer	24	25	26 TBD: Possible car wash for camp fundraiser
The church offices are closed due to staff attendance at the Elim Ministers' Conference. If needed, please email the church office at office@wolcf.org , and someone will follow up with you as soon as possible.						
27 Worship 10am Pastor Phil International Potluck for Mis- sion's Month No Youth Grp	28 Memorial Day Worship Team Practice 6-8pm	29	30 Prayer 9am	31		

May Mission's Month at WOL

Word of Life is still going strong in its mission's emphasis and support! Mission's month started early in April with the Seidlers and Alcides Roman, and **on May 27, we will have an International potluck lunch!** Thank you for your faithfulness to care for those who are serving in foreign and home missions. This is part of loving God, loving people, and loving the nations!

Word of Life Missionaries are:

Eddie and Kelsey Abrams--Asia

George and Lisset Phillips--Chile

Robbie and Pat Evans--Mexico

Bruno and Beth Sene--Japan

Liz McNeill--USA BASIC College Ministries

Robin and Susan Steen--Asia

We also support some short-term missionaries. This month, you will have an opportunity to renew mission giving pledges for another year. Prayerfully consider if this is something you would like to do as we reach the nations for Christ! If you do not feel a leading to support a specific missionary, consider giving to "Missions Where Needed Most" to help the church fulfill its mission pledges.

North Eastern Worship Camp (NEWC) Fundraisers!

The youth, ages 12-18, are going to worship camp for a four-day worship training intensive! They are so excited to learn new musical skills and spend time in worship. What an opportunity to be among other young people who are as on fire for God as they are and to receive hands on training from experienced musicians, songwriters, and worship leaders.

The early bird rate for each camper due by June 1, is \$199, and the standard rate is \$225. Based on the youth that are interested in going, they need to raise \$1,300. Any amount donated will help offset this cost. This will include overnight accommodations and meals in or near Bloomfield, New York.



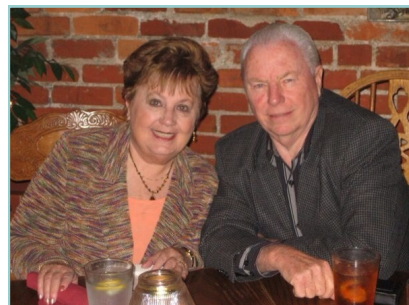
Pastor Jonah and Bet Cortes are organizing fundraisers for this event. Please prayerfully consider giving to offset the cost of each camper. The youth will lead worship and serve in the service on May 20 as one way to raise awareness for this event. Another fundraiser that may take place is carwash on May 26.

To donate, you may give online at wolcf.org or in the Sunday offering. Please mark your donation as "Youth Worship Camp" to clarify your donation. Thank you so much!

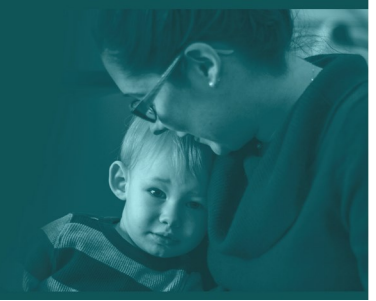
Rev. Paul Johansson at WOL, May 20

We are blessed to have Rev. Paul and Gloria Johansson with us on Sunday, May 20. You will be blessed by his ministry. Please come prepared to give to this couple.

Rev. Paul Johansson is the past president of Elim Bible Institute and College (1994-2006) and currently serves as its Chancellor. He has been with Elim since graduating from the Bible school in 1956. Paul earned a Master's Degree from New York University. Prior to coming to EBI he served as President of New York School of Urban Ministry, a school he started in 1984. He has pastored in North America and has served as a missionary in East Africa where he co-founded The Nairobi Pentecostal Bible College. He has also been on the staff of Elim Bible Institute as instructor, Dean of Men, Dean of Students and Vice-president. Paul was appointed to the Council of Elders in 1971. He and his wife, Gloria, have two children.



LIFE GROUPS



3374 Winton Road South | Rochester | NY | 14623 | 585-272-8885 | wolcf.org | office@wolcf.org



For Kids During School Year:

Kids' Club, Grades K-5
Two Sunday nights/month 6 pm
Contact: Mrs. Kreider
jkreiderfamily@gmail.com



For Men:

Men's Breakfast
2nd Saturday/month, 9 am
Contact: Wes Hall
paracraftsplus@yahoo.com



For Youth:

Stand4 Youth Group, Ages 11-19
Sunday nights, 6 pm
Contact: Pastors Jonas & Bet Cortes
bethanycortes@wolcf.org



For Women:

Women of Promise Meeting
3rd Wednesday/month, 6:30 pm
Contact: Sheryl McNeill
office@wolcf.org



For College & Career:

Once a month
Saturday nights, 6:30 pm
Contact: Rachel Mohler
rae@4561@gmail.com



For Young Families

For those with young kids
Saturdays/monthly, 4-6 pm
Contact: Albert & Sarah Yu
sarah.d.yu@gmail.com



For College Students: BASIC

(Brothers and Sisters in Christ) RWC
Thursday nights, 7 pm
Contact: Bekah McNeill
mceillr.14@gmail.com



For Empty Nesters:

1st Saturday/month. 7 pm
Contact: John & Adele Squires
jandasquires@gmail.com



For Everyone:

Life and Leadership Training
Watch for details
Contact: Alex Seidler
alexandjodi@gmail.com



For Everyone:

First Wednesday Prayer
1st Wednesday/month, 7 pm
Contact: Church office
office@wolcf.org



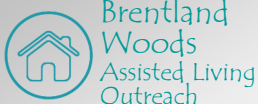
For Everyone:

REACH Bible Study
1st & 3rd Thursday nights 6:30 pm
Contact: **Fantauzzo Family**
djfantauzzo@gmail.com



For Everyone:

Bible Study
2 Sunday nights/month, 6 pm
Contact: **D'Alessandro Family**
connie@compmedics.net



For Everyone:

Outreach
3rd Saturday/month 2 pm
Contact: Dan & Laurie Neumann
drnumann2@gmail.com